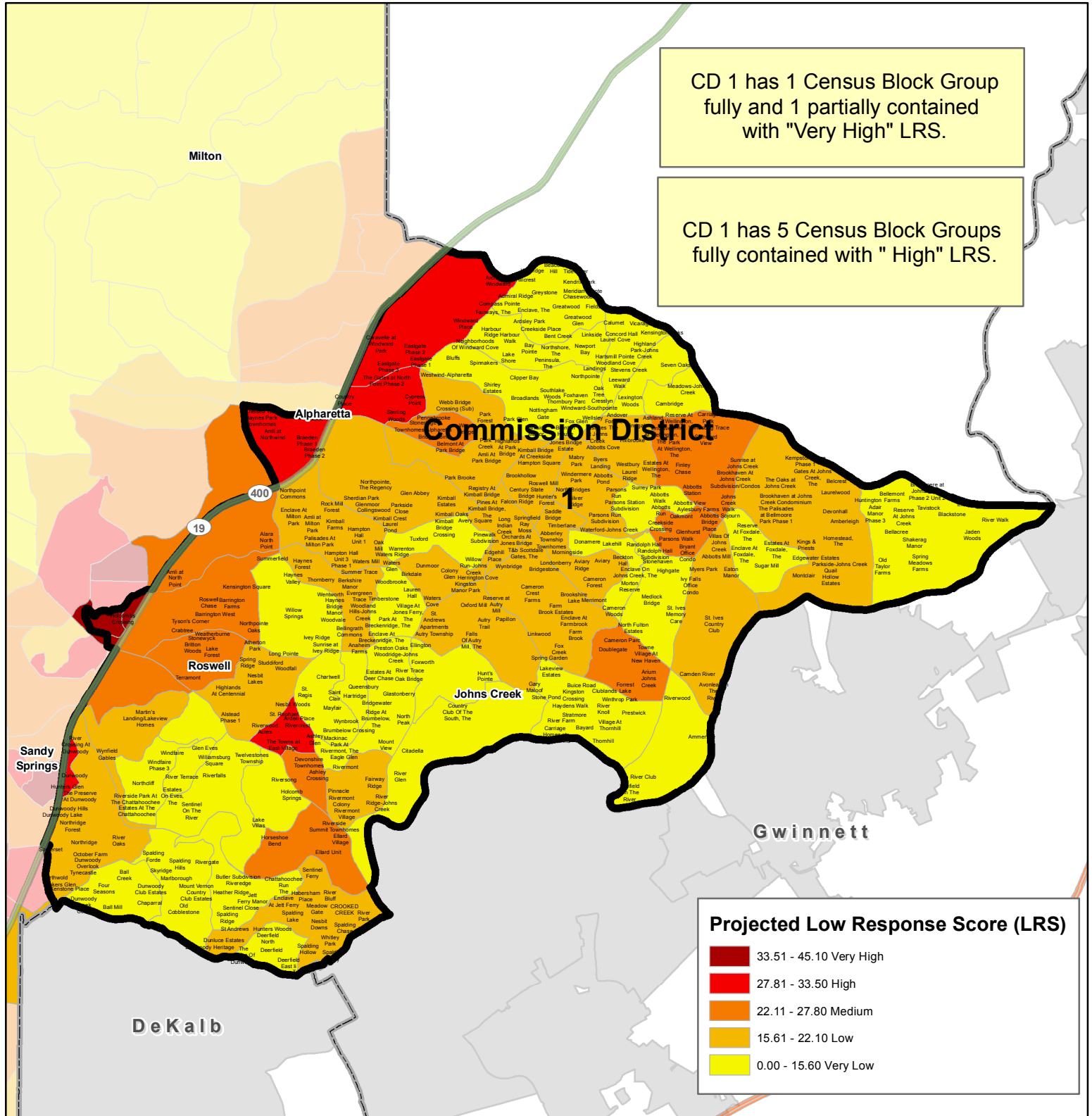




Fulton County 2020 Census Commission District 1



Low Response Score (LRS) is a measure created by the U.S. Census Bureau to predict areas that are less likely to respond to the Census. The higher the LRS, the more difficult it is to count that Block Group.
Source: U.S. Census Bureau 2016 Planning Database



Demographic Profile, Commission District 1

Quick Facts: Commission District 1

- ❖ CD 1 has the largest median household income in the county.
- ❖ CD 1 has the lowest percentage of households below poverty level in the county.
- ❖ Roughly one-third of the population in CD 1 are renters.
- ❖ CD 1 has a low housing vacancy rate.
- ❖ About one-quarter of the population in CD 1 is under 18.
- ❖ CD 1 has the smallest African-American population in the county.

Source: ESRI Data (05/2018)

| | | | |
|------------------------------------|---------|---|-----------|
| Total Population | 168,426 | Limited English, 65+ | 0.8% |
| Population Under 5 | 5.8% | Total Households | 60,539 |
| Population Under 18 | 25.4% | Median HH Income | \$108,298 |
| Population Over 65 | 13.2% | Households Below Poverty Level | 5.9% |
| White (Non-Hispanic) | 60.8% | Population Over 25, Less than HS Diploma | 4.6% |
| Black (Non-Hispanic) | 11.5% | Population, No Health Insurance | 10% |
| Hispanic Origin | 8% | Renter Occupied Units | 32% |
| Limited English, Ages 5-17 | 0.2% | Vacant Units | 2.9% |
| Limited English, Ages 18-64 | 2.5% | Multi-Unit Housing (10+) | 18% |

CD 1 Subdivision with **High** LRS

| | | |
|----------------------------|---------------------------------|----------------------------------|
| Amli at Northwind | Enclave at East Roswell Phase 1 | St. Raphael |
| Archstone Windward | Enclave at East Roswell Phase 2 | Sterling Woods |
| Arden Place | Haynes Park Townhomes | The Gates At North Point Condo |
| Braeden Phase 1 | Hunters Glen | The Gates at North Point Phase 2 |
| Braeden Phase 2 | Kimball Bridge Walk | The Towns at East Village |
| Caravelle at Windward Park | Nesbit Woods | Windward Place |
| Chelsea Walk | River Crossing At Dunwoody | |
| Country Place | Rivercrest | |
| Cypress Point | Riverwood Acres | |
| Dunwoody | Southshore | |
| Eastgate Phase 1 | | |
| Eastgate Phase 2 | | |
| Eastgate Phase 3 | | |

CD 1 Subdivision with **Very High** LRS

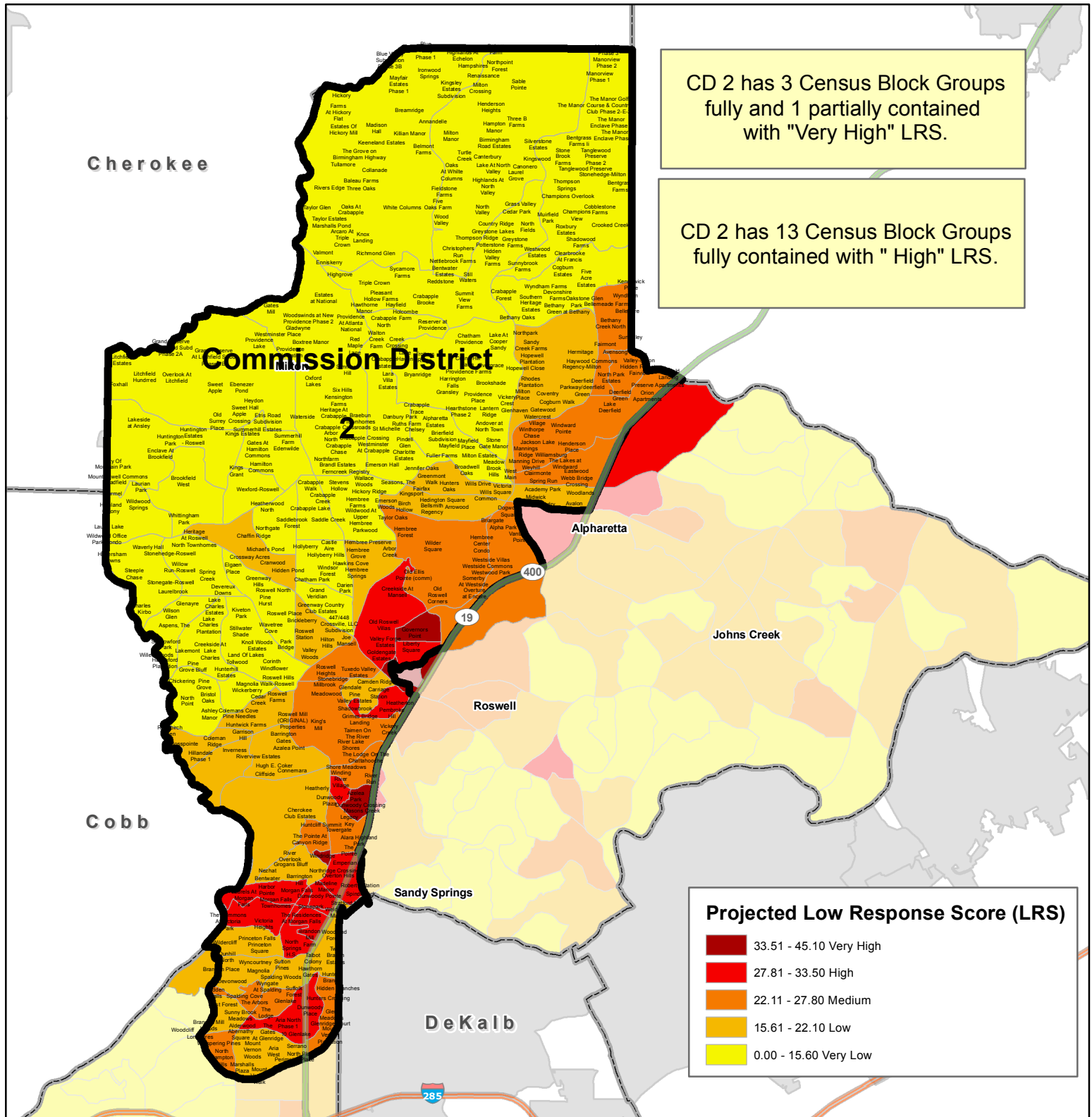
Holcombs Crossing



Fulton County

2020 Census

Commission District 2



Low Response Score (LRS) is a measure created by the U.S. Census Bureau to predict areas that are less likely to respond to the Census. The higher the LRS, the more difficult it is to count that Block Group.
Source: U.S. Census Bureau 2016 Planning Database



Demographic Profile, Commission District 2

CD 2 Subdivision with Very High LRS

Azelea Park
Dunwoody Crossing
Governors Point
Holcombs Crossing
Liberty Square

Masons Creek
Northridge Square
Parkmont
Windridge

CD 2 Subdivision with High LRS

10 Glenlake
Alderwood
Alderwood On Abernathy
Condo/Townhomes
Aria North Phase 1
Arlington At Perimeter Center
Avalon
Bent Willow Townhomes
Bonnie River Estates
Brandon Mill Farm
Briars Of Dunwoody
Cherry Orchard Place
Colquitt Commons
Colquitt Terrace
Creekside At Mansell
Dunwoody Place
Dunwoody Pointe
Dunwoody Square
Dunwoody Station
Emperian
Goldengate Estates
Harbor Pointe
Heatherton
Lafayette Square
Laurels At Morgan Falls
Liberty Square
Madeline Manor
Magnolia Park
Morgan Falls
Morgan Falls Townhomes

Morgans Landing
North River
North Springs H.S.
Northridge Center
Northridge Crossing
Oaks At Dunwoody
Old Roswell Townhomes
Old Roswell Villas
Overton Hills
Peachtree Crossing
Pembroke Hill
Prescott Walk
Regency At Mansell
River View
Roberts Station
Roswell Commons
Roswell Ridge
Sandy Springs Townhomes
Shadowbrook
Spalding Bridge
Spalding Springs
Spindlewick
Springside Park
Stockholders Place
Stonepark
Stratford Manor
Telfair Gates At Dunwoody
The Avalon On Abernathy
THE CASCADE AT
MORGAN

FALLS/FOUNTAINS AT
MGN FLS
The Commons At Victoria
Park
The Hamptons At Sandy
Springs
The Legends At Dunwoody
The Parc At Dunwoody
The Park At Trowbridge
The Residences At Morgan
Falls
The Shoppes Of Morgan
Falls
Trowbridge Crossing
Valley Forge Estates
Victoria Heights
Winding River Village

| | | | |
|------------------------------------|---------|---|----------|
| Total Population | 173,944 | Limited English, 65+ | 0.1% |
| Population Under 5 | 5.9% | Total Households | 69,793 |
| Population Under 18 | 23.3% | Median HH Income | \$86,746 |
| Population Over 65 | 12.6% | Households Below Poverty Level | 7.8% |
| White (Non-Hispanic) | 66.8% | Population Over 25, Less than HS Diploma | 4.7% |
| Black (Non-Hispanic) | 16% | Population, No Health Insurance | 11.3% |
| Hispanic Origin | 10.7% | Renter Occupied Units | 40.6% |
| Limited English, Ages 5-17 | 0% | Vacant Units | 5% |
| Limited English, Ages 18-64 | 3.1% | Multi-Unit Housing (10+) | 25.1% |

Quick Facts: Commission District 2

- ❖ CD 2 has the largest Hispanic population in the county.
- ❖ CD 2 has the largest population between the ages of 18-64 with limited ability in English.
- ❖ About 40% of housing in CD 2 are occupied by renters.
- ❖ About one-quarter of the population in CD 2 live in multi-housing units.
- ❖ Comparatively, CD 2 has a low housing vacancy rate.

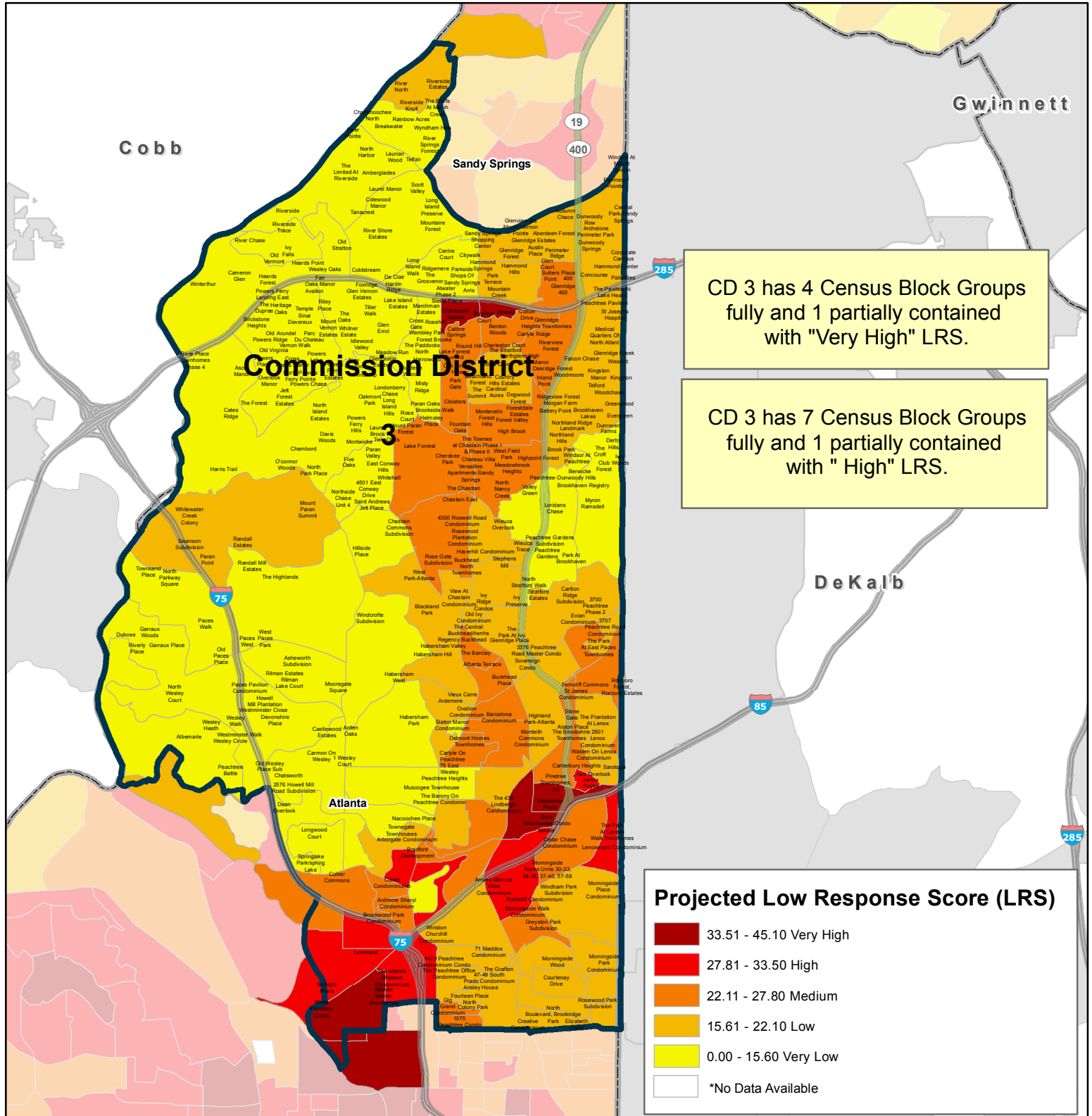
Source: ESRI Data (05/2018)



Fulton County

2020 Census

Commission District 3



Low Response Score (LRS) is a measure created by the U.S. Census Bureau to predict areas that are less likely to respond to the Census. The higher the LRS, the more difficult it is to count that Block Group.
Source: U.S. Census Bureau 2016 Planning Database



Demographic Profile, Commission District 3

Quick Facts: Commission District 3

- ❖ CD 3 is the most populous district in the county.
- ❖ CD 3 has the lowest population under 5 and the lowest population under 18.
- ❖ CD 3 has the highest population over 65.
- ❖ The largest white population is located in CD 3.
- ❖ CD 3 has the most households in the county.
- ❖ CD 3 has the fewest people with less than a high school education.
- ❖ About half of housing units in CD 3 are occupied by renters.

Source: ESRI Data (05/2018)

CD 3 Subdivision with Very High LRS

| | |
|--------------------------------------|-----------------------------|
| Atlantic Station Townhomes | Lake Placid |
| Brighton Court | Mosaic |
| Broadview Place | Pinetree Townhomes, Inc |
| Broadview Place Townhomes Lots 33-39 | Prado North |
| Broadview Place Townhomes Lots 10-16 | Sera Townhomes/Condo Master |
| Broadview Place Townhomes Lots 1-3 | Sierra Creek |
| Broadview Place Townhomes Lots 4-9 | Sierra Place |
| Calibre Springs | White Provision Condo |
| Charleston Square | |
| Highland Circle | |
| Highland Springs | |

| | | | |
|-----------------------------|---------|--|----------|
| Total Population | 185,262 | Limited English, 65+ | 0.2% |
| Population Under 5 | 4.6% | Total Households | 93,116 |
| Population Under 18 | 16.8% | Median HH Income | \$91,318 |
| Population Over 65 | 14.4% | Households Below Poverty Level | 8.4% |
| White (Non-Hispanic) | 72.6% | Population Over 25, Less than HS Diploma | 3.9% |
| Black (Non-Hispanic) | 13% | Population, No Health Insurance | 8.4% |
| Hispanic Origin | 9.4% | Renter Occupied Units | 50.5% |
| Limited English, Ages 5-17 | 0.2% | Vacant Units | 11.1% |
| Limited English, Ages 18-64 | 2.3% | Multi-Unit Housing (10+) | 50.5% |

CD 3 Subdivision with High LRS

| | |
|----------------------------------|------------------------------------|
| 1430 West Peachtree Office Condo | Lenoxwood Condominium |
| Ansley-Monroe Villas Condominium | Lynnhurst |
| Bishop's Place | Residences At Lavista Walk Condo |
| Buckhead Park At Lenox Townhomes | The Atlantic Midtown Condominium |
| Francis Xiv Condominium | The Park At Lavista Walk Townhomes |
| Lenox Pointe | Woodland Hills Condominium |



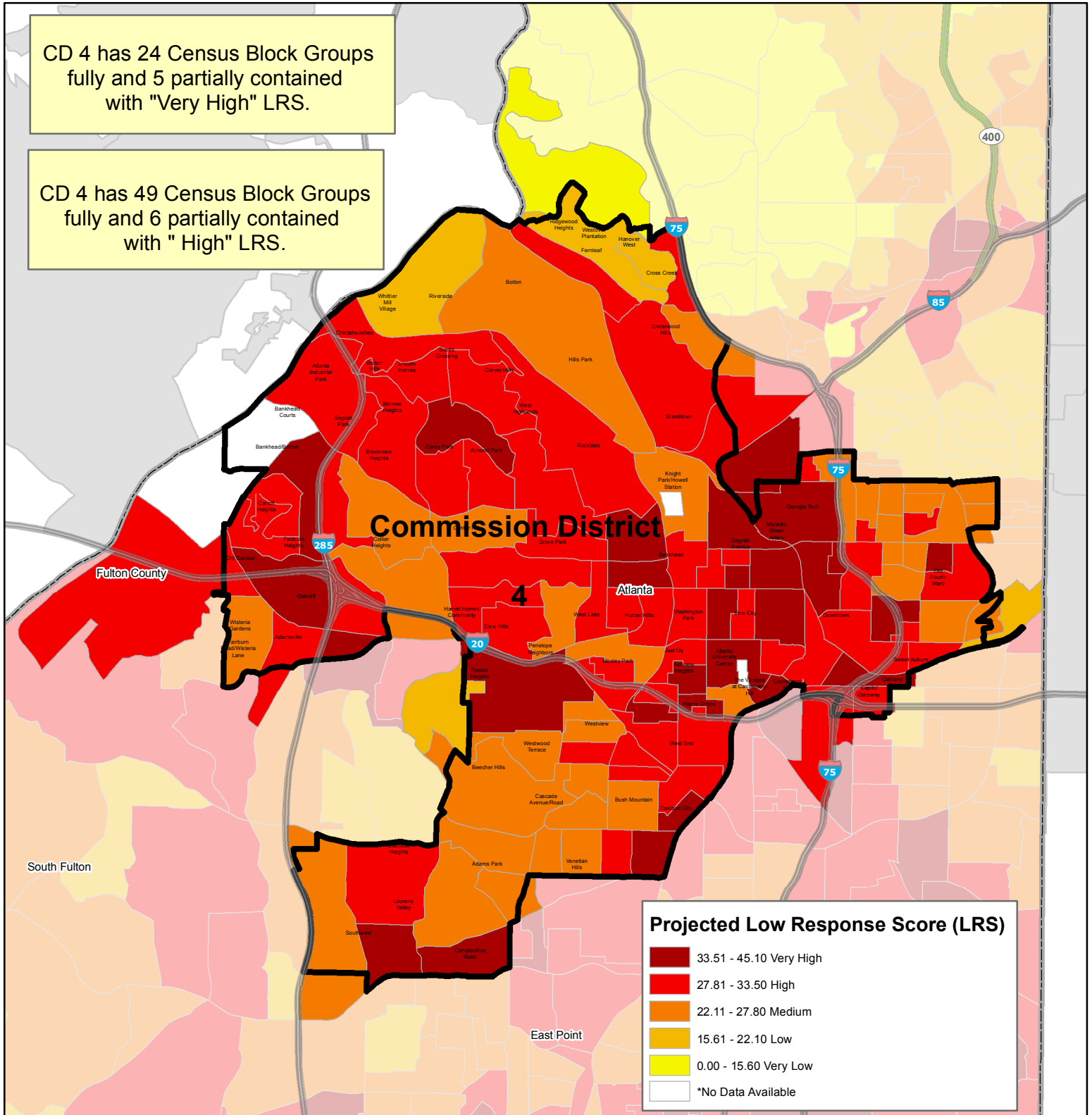
Fulton County

2020 Census

Commission District 4

CD 4 has 24 Census Block Groups fully and 5 partially contained with "Very High" LRS.

CD 4 has 49 Census Block Groups fully and 6 partially contained with "High" LRS.



Low Response Score (LRS) is a measure created by the U.S. Census Bureau to predict areas that are less likely to respond to the Census. The higher the LRS, the more difficult it is to count that Block Group.
Source: U.S. Census Bureau 2016 Planning Database



Demographic Profile, Commission District 4

CD 4 Subdivision with Very High LRS

865 North Avenue
Condominium
Dodson Manor
Eric Williams

Landmark Condominiums
Oakland Park Townhomes
Swift & Co Loft Condo
Techwood Homes

Waverly Crest Condo
Westgate Condo
Woodlawn Estates

CD 4 Subdivision with High LRS

123 Luckie Street
Condominiums

314 Fifth Street
Condominium

336 Fifth Street
Condominium

375 Sixth Street
Condominium

400 West Peachtree Condo
71 Lucy Street Townhomes

765 Argonne Condominiums
778 Charles Allen Drive
Condomin

Aaron Subdivision
Ashley Point Subdivision

Auburn Pointe
Audrey Place

Boulder Park
Carlyle Square on Collier
Condos

Castleberry Point Condo
Commercial

Chelsea Westside Phase 1
Cross Creek Condominium

Davis Summit
Defoor Glen Condo

Defoors Square
Defoors Walk

Duo Condominium
East Avenue Cottages
Condo

Edgewood Exchange
Fifth Street Condominium

Forest Avenue Extension

Glassworks Condo

Glen Iris

Glen Iris Townhomes Phase
2 Units 7-13

Glen Iris Townhomes Phase
3 Unit 1-6

Glen Iris Townhomes Phase
4 Units 24-28

Glen Iris Townhomes Units
14-23

Glenlocke Grove
Holly Downs

Johnette Elder
Johnsons Grove Subdivision

JWC Highland Park
Townhomes

Kevin Heights
Le Banaje Condominium

Liberty Park
M-West Commercial

Nether Wallop Mews
Condominium

Nugrape Lofts Condo
Oak Cliff Park

Perry Homes
Raoul Estates

Reserve at Collier Hills Tract
2

RRF Sampson LLC/300
Sampson St Subdivision

The Healy Condo
The Ponce Condo

The Ponce Condominium
The Residences At 45 Allen

Plaza

The Savannah At
Washington Park

The Stonewall Battery
Townhomes

The Tyree Condominium
Thomas J Hills

Trey Manor
Verbena Subdivision

West Highlands at Habershal
Subdivision

West Highlands Subdivision

| | | | |
|------------------------------------|---------|---|----------|
| Total Population | 172,179 | Limited English, 65+ | 0% |
| Population Under 5 | 5.5% | Total Households | 70,899 |
| Population Under 18 | 17.2% | Median HH Income | \$42,772 |
| Population Over 65 | 10.6% | Households Below Poverty Level | 23.8% |
| White (Non-Hispanic) | 24% | Population Over 25, Less than HS Diploma | 11.5% |
| Black (Non-Hispanic) | 66.4% | Population, No Health Insurance | 15.2% |
| Hispanic Origin | 4.5% | Renter Occupied Units | 52.5% |
| Limited English, Ages 5-17 | 0.1% | Vacant Units | 20.9% |
| Limited English, Ages 18-64 | 0.6% | Multi-Unit Housing (10+) | 40% |

Quick Facts: Commission District 4

- ❖ Nearly one-quarter of households in CD 4 are below poverty level.
- ❖ Over 11% of population in CD 4 is without a high school diploma.
- ❖ Over 15% of population in CD 4 is without health insurance.
- ❖ Over half of housing units in CD 4 are occupied by renters.
- ❖ CD 4 has over 20% vacancy rate (highest in the county).
- ❖ CD 4 has the lowest Hispanic population in the county.

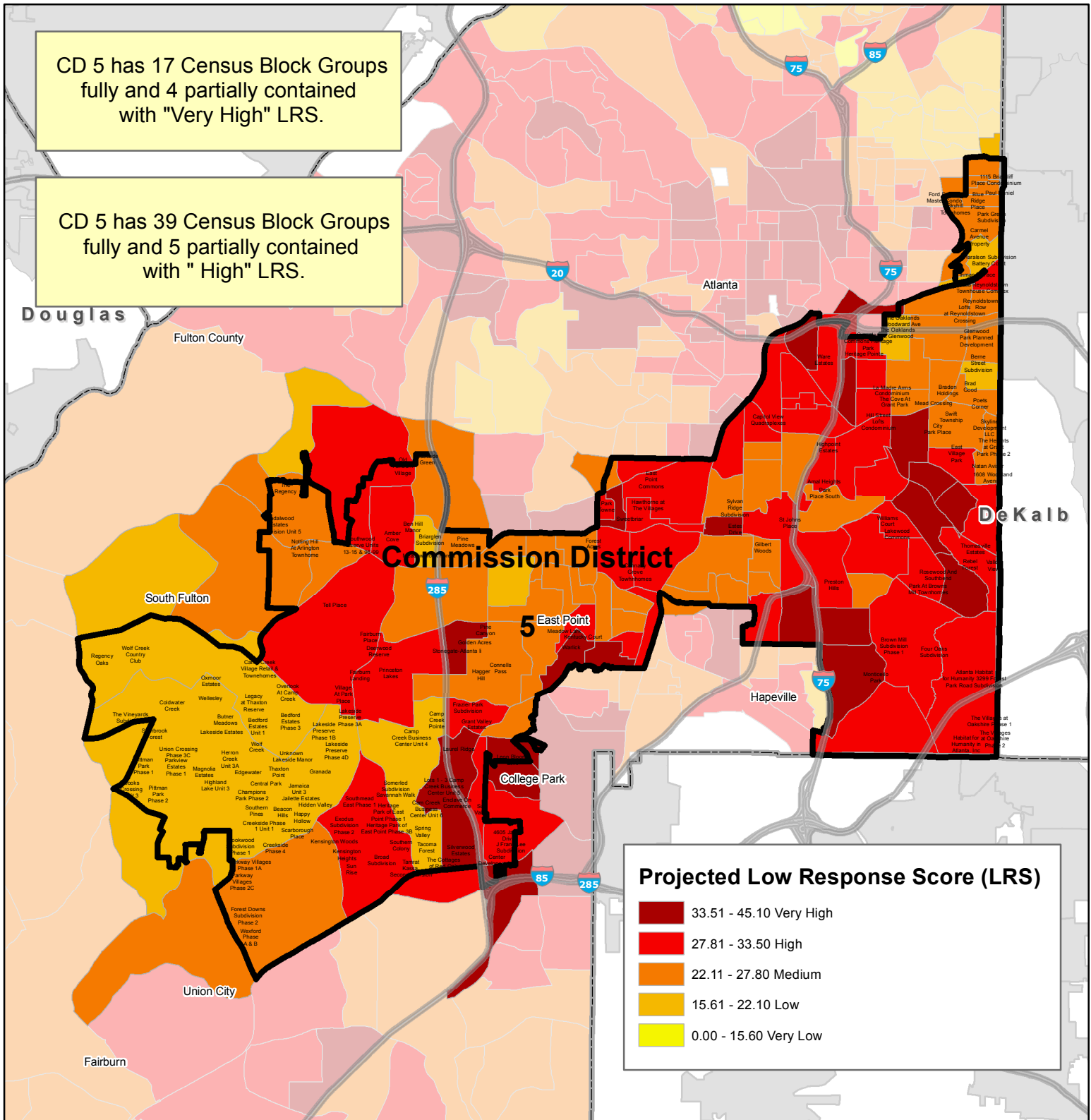
Source: ESRI Data (05/2018)



Fulton County

2020 Census

Commission District 5



Low Response Score (LRS) is a measure created by the U.S. Census Bureau to predict areas that are less likely to respond to the Census. The higher the LRS, the more difficult it is to count that Block Group.
Source: U.S. Census Bureau 2016 Planning Database



Demographic Profile, Commission District 5

CD 5 Subdivision with **Very High LRS**

Amoco Oil Company
Cam Creek Business Center Unit 6
Enclave On Commerce
Estes Drive
Fairfax MK Inc
Highwood Park Condominium

Kentucky Court
Laurel Ridge
Leon Bloom, Et Al
Lots 1 - 3 Camp Creek Business Center Unit
5
Monticello Park Phase 1A

Pine Canyon
Richmond Oaks Townhouses
Silverwood Estates
Stonegate-Atlanta li
The Cottages of Red Oak
Thomasville New Town Subdivision Unit 2

Warlick
WILLIE C BURDETT AND MOSELLA C
BURDETT

CD 5 Subdivision with **High LRS**

1838 Lakewood Terrace
1897 Jonesboro Road
4020 Church Street
4605 Janice Drive
Amal Heights
Amber Cove
Ashton Browns Mill
Atlanta Habitat For Humanity 3299 Forest
Park Road Subdivision
Atlanta Habitat For Humanity Inc
Atlanta Habitat For Humanity Kings &
Collins Property
Bon Haven Estates Section A Unit 2
Bon Haven Estates Section B Unit 2
Bon Haven Estates Section D Unit 1
Broad Subdivision
Brown Mill Subdivision Phase 1
Browns Mill Walk at The Vineyards
Calvin & Bernard Brown
Capitol View Quadrplexes
Center Developers Inc
Columbia Residential of Mechanicsville
Residential Redevelopment
Connally Grove Townhomes
Deerwood Reserve
DS Hudgens Jr
East Hampton Property Associates
East Point Commons
East Village Park
Exodus
Exodus
Exodus Subdivision Phase 2
Fairburn Landing
Fairburn Place
Falcon Forest
Four Oaks Subdivision
Frazier Park Subdivision
Grant Valley Estates
Greenlea Commons Heritage Park
Habit for Humanity in Atlanta 2081 Browns
Mill Road
Habitat for Humanity in Atlanta Inc,
Boulevard Drive
Habitat for Humanity in Atlanta, Inc
Hawthorne at The Villages
Heritage Park of East Point Phase 1
Heritage Park of East Point Phase 2
Heritage Park of East Point Phase 3A
Heritage Park of East Point Phase 3B
Heritage Pointe
Highpoint Estates
Hill Street Lofts Condominium
J Frank Lee Subdivision
Kensington Heights

Kensington Woods
Lakewood Commons Phase 2
Lee Family LLC
Level Ridge Road Tract
Lily Cove (0 Welcome All Road)
Lily Point 4850 Welcome All Road
Meadow Lark
Mike Brown
Moda Reynoldstown Townhouse Complex
Old Fairburn Village
Park Towne
Patterson Place
Patterson Place Phase 2
Point to Point Land Surveyors
Preston Hills
Princeton Lakes
Rebel Forest
Reynolds Square Units 1-7 & 22 & 23
Rosewood at Southbend
Southern Colony
Southmead East Phase 1
Southside Industrial Park Chi Acquisitions
LP
Southside Industrial Park Phase 1
Southside Industrial Park Phase 1 Lot 10
Southwood Reserve Units 13-15 & 96-99
Southside Industrial Park Phase 2
St Johns Place
Sun Rise
Sun Valley
Swan Terrace Townhomes
Sweetbriar
Tamrat Kassa, Second Revision
Tell Place
The Park at Browns Mill Phase 1
The Park at Browns Mill Phases 2 & 3
The Park at Browns Mill Phases 4 & 5
The Reserve at Brownsmill
The Village at Browns Mill
The Villages at Oakshire Phase 1
The Villages at Oakshire Phase 2
The Vineyards at Brownsmill
Thomasville Estates
Unknown
Valley View
Village At Park Place
Virginia Manor Extension
Ware Estates
Will Lee Pines
Williams Court
Church Street
4605 Janice Drive
Amal Heights

Amber Cove
Atlanta Habitat for Humanity 3299 Forest
Park Road Subdivision
Atlanta Habitat For Humanity Inc
Atlanta Habitat For Humanity Kings &
Collins Property
Bon Haven Estates Section A Unit 2
Bon Haven Estates Section B Unit 2
Bon Haven Estates Section D Unit 1
Broad Subdivision
Brown Mill Subdivision Phase 1
Calvin & Bernard Brown
Camp Creek Business Center Unit 4
Capitol View Quadrplexes
Center Developers Inc
Columbia Residential of Mechanicsville
Residential Redevelopment
Connally Grove Townhomes
Deerwood Reserve
DS Hudgens Jr
East Hampton Property Associates
East Point Commons
East Village Park
Elysian Estates
Exodus
Exodus
Exodus Subdivision Phase 2
Fairburn Landing
Fairburn Place
Falcon Forest
Forest Acres
Four Oaks Subdivision
Frazier Park Subdivision
Grant Valley Estates
Greenlea Commons Heritage Park
Habitat for Humanity in Atlanta Inc,
Boulevard Drive
Habitat for Humanity in Atlanta, Inc
Hawthorne at The Villages
Heritage Park of East Point Phase 1
Heritage Park of East Point Phase 2
Heritage Park of East Point Phase 3A
Heritage Park of East Point Phase 3B
Heritage Pointe
Hidden Valley
Highpoint Estates
Hill Street Lofts Condominium
J Frank Lee Subdivision
Kensington Heights
Kensington Woods
Kentucky Court
La Madre Arms Condominium
Lakeside Preserve Phase 3A
Lakewood Commons

Laurel Ridge
Lee Family LLC
Lily Cove (0 Welcome All Road)
Lily Point 4850 Welcome All Road
Martins Park
Meadow Lark
Moda Reynoldstown Townhouse Complex
Niskey Lake Falls
Old Fairburn Village
Park At Browns Mill
Park At Browns Mill Townhomes
Park Place South
Park Towne
Patterson Place
Patterson Place Phase 2
Preston Hills
Princeton Lakes
Rebel Forest
Regency Park
Reunion Place
Reynolds Square Units 1-7 & 22 & 23
Rosewood And Southbend
Somerled Subdivision
South Oaks at Cascade
Southern Colony
Southmead East Phase 1
Southwood Reserve Units 13-15 & 96-99
Spur 14/Buffington Business Center
St Johns Place
Subdivision of Cruise Property
Sun Rise
Sun Valley
Swan Terrace Townhomes
Sweetbriar
Sylvan Ridge Subdivision
Tamrat Kassa, Second Revision
Tell Place
The Villages at Oakshire Phase 1
The Villages at Oakshire Phase 2
Thomasville Estates
Unknown
Valley View
Village At Park Place
Virginia Manor Extension
Ware Estates
Warlick
White City Estates
Will Lee Pines
Williams Court
Wrenwood Apartments

| | | | |
|------------------------------------|---------|---|----------|
| Total Population | 172,936 | Limited English, 65+ | 0.1% |
| Population Under 5 | 7.2% | Total Households | 65,089 |
| Population Under 18 | 26.1% | Median HH Income | \$49,800 |
| Population Over 65 | 11.8% | Households Below Poverty Level | 17.5% |
| White (Non-Hispanic) | 10.5% | Population Over 25, Less than HS Diploma | 11.1% |
| Black (Non-Hispanic) | 83.2% | Population, No Health Insurance | 17.7% |
| Hispanic Origin | 5.7% | Renter Occupied Units | 36.5% |
| Limited English, Ages 5-17 | 0.2% | Vacant Units | 10.6% |
| Limited English, Ages 18-64 | 1.6% | Multi-Unit Housing (10+) | 16.9% |

Quick Facts: Commission District 5

- ❖ Over 26% of population in CD 5 is under 18 (highest in the county).
- ❖ Lowest white population in the county is in CD 5.
- ❖ CD 5 has the highest African-American population in the county.
- ❖ About 17% of households in CD 5 are below poverty line.
- ❖ About 11% of population in CD 5 has less than high school education.
- ❖ About 18% of the population in CD 5 has no health insurance.
- ❖ 36.5% of housing in CD 5 is occupied by renters.

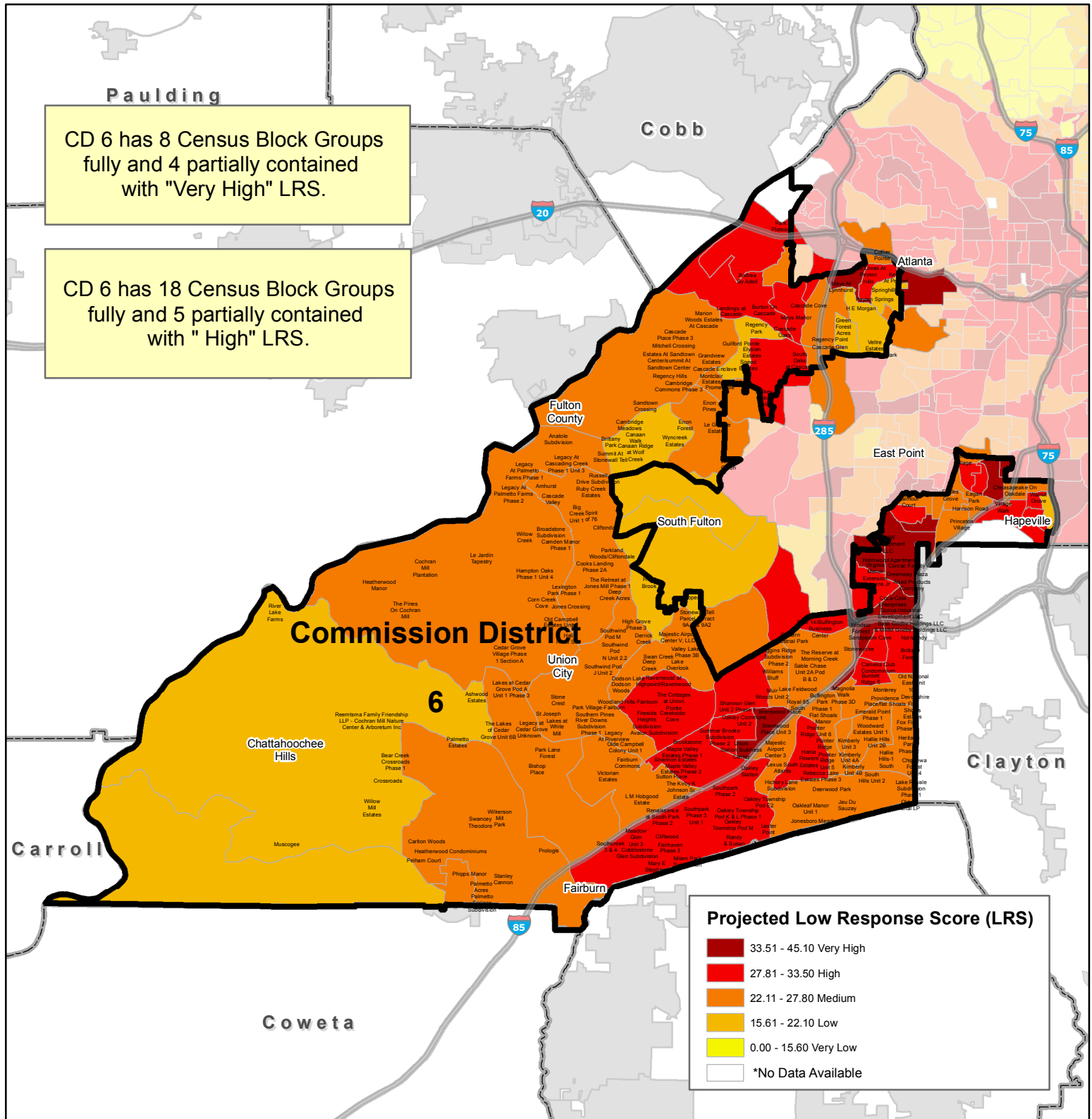
Source: ESRI Data (05/2018)



Fulton County

2020 Census

Commission District 6



Low Response Score (LRS) is a measure created by the U.S. Census Bureau to predict areas that are less likely to respond to the Census. The higher the LRS, the more difficult it is to count that Block Group.
Source: U.S. Census Bureau 2016 Planning Database



Demographic Profile, Commission District 6

CD 6 Subdivision with **High** LRS

Andrea By Adell
Avalon Subdivision
Bradford Crossing At Bethesda
Brittany Forest
Brookstone
Burdett Ridge 3A
Burdett Ridge 4
Burdett Ridge 5
Burdett Ridge 6
Burdett Ridge 7A
Burdett Ridge 7B
Burdett Ridge Phase 1A
Burdett Ridge Phase 2
Burdett Ridge Phase 3
Burton On Cascade
Camden Place
Camelot Club Condominium
Carriage Cove
Cascade Oaks/4001 Cascade Subdivision
Cliffwood
Cobblestone Glen Subdivision
Coventry Phase 2
Creeside Cove
CVS Corporation Buffington Crossing Partners LLC
Cypress Pointe
DS Hudgens Jr
Eddie & Pam Jarrard
Elysian Estates Unit 1
Emerald Forest
Fairhaven Phase 1
Fairhaven Phase 2
Fairhaven Phase 3
Fireside Heights Subdivision
Fletcher & Carol Lewallen
Foxwood Subdivision Phase 1
Foxwood Subdivision Phase 2
Foxwood Subdivision Phase 3
Foxwood Subdivision Phase 4
Gledstone Hills Unit 1
Hania Flowers Estates
Harriston Square
Hichory Lane Subdivision
Huntington Estates
Jade Creek At Peyton Hills
Jireh Place Subdivision
Jonesboro Road LLC
Joshua Crossing
Landings at Cascade
Lattimore Park
Lester Point
Mallory Walk Phase 1
Mallory Walk Phase 2
Maple Valley Estates Phase 1
Maple Valley Estates Phase 2
Martins Park
Mary E Stephens
Mays Manor
Meadow Glen Unit 2
Meadow Glen Unit 3

Meadow Glen Unit 4
Melanie Condominium
Milam Manor Phase 1A
Milam Manor Phase 1B
Milam Manor Phase 2
Milam Park Subdivision
Niskey Lake Falls
Normandy
Oakley Commons Unit 1
Oakley Commons Unit 2
Oakley Park Lots 1 & 2
Oakley Station
Oakley Township Pod 1 Unit 2
Oakley Township Pod E Phase 1
Oakley Township Pod E1 Phase 2
Oakley Township Pod E1 Phase 3
Oakley Township Pod E2
Oakley Township Pod F Phase 1
Oakley Township Pod F Phase 2
Oakley Township Pod G Phase 2
Oakley Township Pod G Phase 3
Oakley Township Pod H
Oakley Township Pod H Phase 2
Oakley Township Pod I Unit 1 & Pod J Unit 1
Oakley Township Pod J Unit 2
Oakley Township Pod K & L Phase 1
Oakley Township Pod K & L Phase 2
Oakley Township Pod M
Old Fairburn Village
Old National Discount Mall
Old National East Unit 3
Old National East Unit 6A
Old Savannah Phase 1
Old Savannah Phase 2
Old Virginia Condominium
Park Plateau
Parkside Subdivision Phase 1A
Parkside Subdivision Phase 1B
Parkside Subdivision Phase 2
Pet Care Properties LLC
Picardy Circle South Phase 1A
Picardy Circle South Phase 1B
Picardy Circle South Phase 1C
Pleasant Hill Townhouses Condomi
Pointer Ridge Unit 3
Pointer Ridge Unit 5
Randy & Susan Cox
Ravenwood at Highpoint/Ravenwood
Rebecca Lake Estates Phase 1
Rebecca Lake Estates Phase 3
Rebecca Lake Estates Subdivision Unit 2
Red Oak Walk
Redus One LLC
Renaissance at South Park Phase 2
Reunion Place Unit 3
Reunion Place Unit 4
Reunion Place Unit 2
Shannon Cove
Shannon Estates
Shannon Glen Phase 1

Shannon Glen Unit 2 Phase 1
South Oaks at Cascade
Southcreek 3 & 4
Southpark Phase 2
Southpark Phase 3 Unit 1
Spur 14/Buffington Business Center
Stone Point Colony
Subdivision of Cruise Property
Summer Brooke Subdivision Phase 1
Summer Brooke Subdivision Phase 2
Summerwood Unit 1
Summerwood Unit 2
Summerwood Unit 3
Sun Valley
The Cottages at Union Pointe
The Terraces at Union Pointe Phase 1
The Villages at Union Pointe Phase 1
The Villages at Union Pointe Phase 2
Three Lakes Development Unit 1 Phase 1
Three Lakes Development Unit 1 Phase 2
Three Lakes Phase 3
Trotters Farm Estates Phase 1
Trotters Farm Estates Phase 2
Trotters Farm Estates Phase 3
Trotters Farm Estates Phase 4
Union Crossing Office Park
Vickers Mill Subdivision
Village Walk
Virginia Manor Extension
Walnut Grove
Walter E & Clare H Hindman
White City Estates
Wildwood Lake Estates
Woodland Hills-Fairburn
Yoon Joo Kim Hartigan

| | | | |
|------------------------------------|---------|---|----------|
| Total Population | 166,180 | Limited English, 65+ | 0.1% |
| Population Under 5 | 7.2% | Total Households | 68,056 |
| Population Under 18 | 23.8% | Median HH Income | \$41,880 |
| Population Over 65 | 11.7% | Households Below Poverty Level | 24.8% |
| White (Non-Hispanic) | 17.6% | Population Over 25, Less than HS Diploma | 13.7% |
| Black (Non-Hispanic) | 76.5% | Population, No Health Insurance | 19.4% |
| Hispanic Origin | 5% | Renter Occupied Units | 49.4% |
| Limited English, Ages 5-17 | 0% | Vacant Units | 16.4% |
| Limited English, Ages 18-64 | 1.1% | Multi-Unit Housing (10+) | 26.2% |

Quick Facts: Commission District 6

- ❖ CD 6 is the least populous district.
- ❖ CD 6 has the lowest population over 65.
- ❖ CD 6 has the lowest median household income in the county.
- ❖ 24.8% of households in CD 6 are below poverty level (highest in county).
- ❖ CD 6 has the highest percentage of people with less than a high school education at 13.7%.
- ❖ Nearly one-fifth of the population in CD 6 has no health insurance (highest).
- ❖ About half of housing units in CD 6 are rentals.

Source: ESRI Data (05/2018)

CD 6 Subdivision with **Very High** LRS

Allied Products Company
Bask Godby Holdings LLC & MMM Godby Holdings LLC
Brentwood Place
Brentwood Place Unit 2
Brentwood Place Unit 3
Coca-Cola Enterprises
Conrac Facility
Cricket Glen Townhouses
Dairy Queen at College Park
Del Taco Corporation & Orangeblossom Company NV

Dolphin Homes Corporation Old National Square Unit 1
Dolphin Homes Corporation Old National Square Unit 2
Dolphin Homes Corporation Old National Square Unit 3
Fairfax MK Inc
Fifth Replat of Dolphin Homes Corporation Old National Square
Figgie International
Frank S Falders Jr & L Judson Akin
Greenway Plaza
H E Morgan

Helmwood Apartments
Heritage Walk
Jack D Hunter
Jamestown Court Condominium
John Weiland Homes & Neighborhoods
Joseph D Giovinco Subdivision
Kemi Construction Company
Legacy At King Walk
Leon Bloom, Et Al
Massachusetts Mutual Life Insurance Company &

Sullivan/Best Joint Venture
Mays At Lynnhurst
Millennium Center of Atlanta
MK Industries LLC
Old National Discount Mall
RHW Development LLC
Sandpipers Cove
Shannon Community Phase 4
Southport Subdivision
Spring Hill Suites at GCC Gateway Center

Stonewycke
Taurus Industrial Development LLC
Third Replat of Perimeter South Business Park
Third Replat of Perimeter South Business Park
Three Lakes Development Unit 1 Phase 1
Union Station Business Center
Wade H Houston and Louis B Houston and Winfred S Tucker
William Danny King
WILLIE C BURDETT AND MOSELLA C BURDETT
Windsor Forrest